



SERVICES PROVIDED BY GCI

- Owner's Authorized Representative (OAR)
- Design Management and Review
- Project Management (PM)
- Construction Inspection

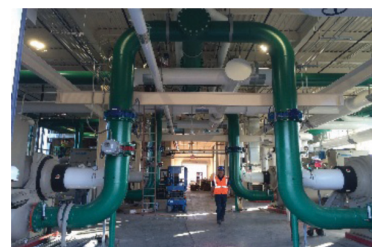
MAIN PROJECT ELEMENTS

- Sea wall construction
- Relocation of utilities, storm water system, and adjacent road
- Designed and constructed for future expansion

ORLANDO INTERNATIONAL AIRPORT BP-442, New Central Chiller Plant Airside 4 Improvement Program

This Design/Bid/Build project at the Orlando International Airport (OIA) created a completely new central energy plant building and associated cooling tower enclosure to support cooling for Airside 4. Construction of the new plant required reclaiming land from an existing retention pond using a concrete sea wall.

The work included four (4), 700-Ton magnetic bearing chillers, three (3) cooling towers, pumps, underground chilled water lines, condenser water lines, future glycol lines, and a backup generator to support the operation of all equipment in the event of main power loss. Included in the scope of this project was shifting the adjacent ground support equipment road onto reclaimed land and multiple utility relocations including new potable force main and water lines, electrical duct bank and OUC transformers. This project required close coordination around main aircraft fuel lines.



CONSTRUCTION COST: \$16,375,483

COMPLETION DATE: June 2016